

Review of Fall Incidents in the Department of Rehabilitation, Kowloon Hospital

YW Kun, KH Ting, A Chau, H Cheung, YC Lau

Objectives



■ To assess the related factors of fall

■ To enhance the fall prevention program

Data Collection

- The Kowloon Hospital Rehabilitation Building: 8 wards
- January to August 2007
- 100 fall cases
- AIRS

Incident Overview [Patient Fall Incident]

(*) Fields must be entered

Hospital * where the incident occurred

Reporting Dept. *

Department(s)
involved *

Personal Particulars (Click the [Click to Download] button to download the patient's information from CMS/ePR)

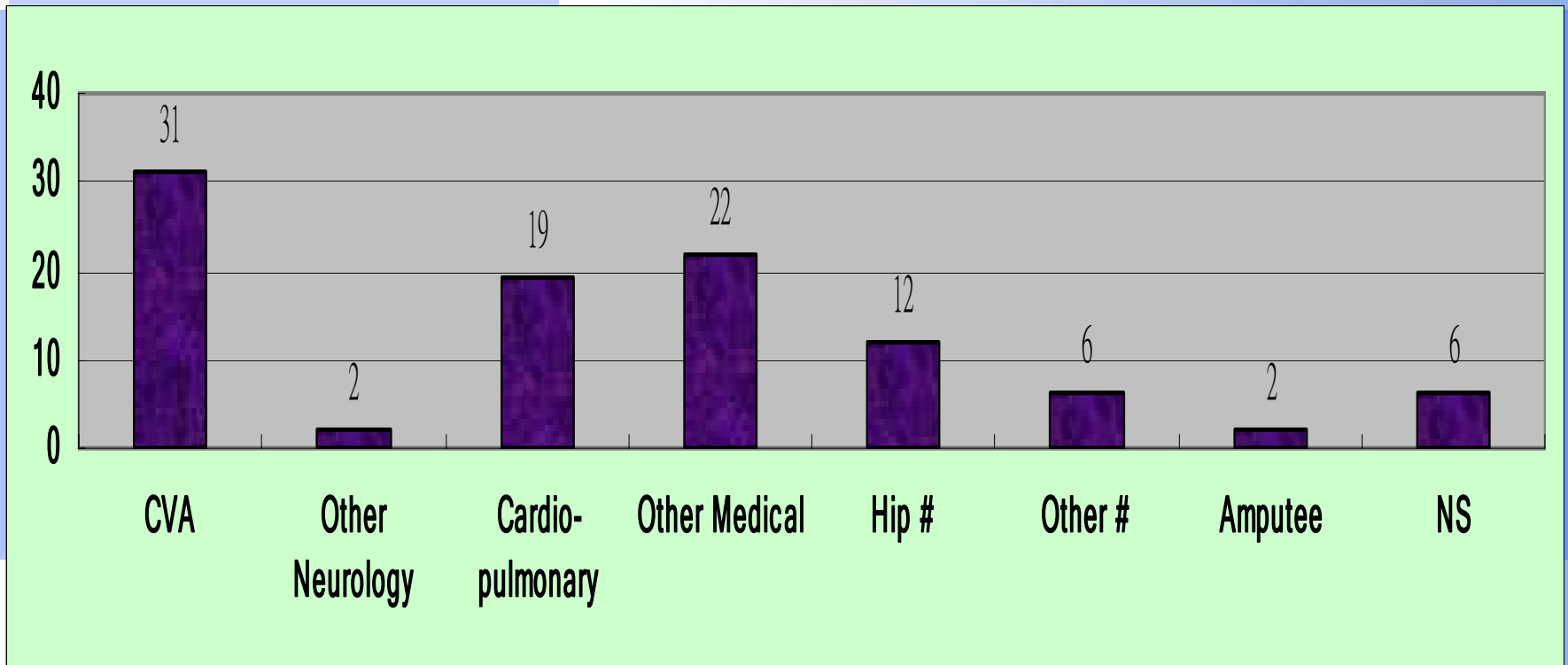
Patient Identification Not AvailablePatient Type AED Attendant Day Patient In-patient Out-patientHKID No. * [Click to Download
Patient Information](#)Chinese Name Name * Age Date of Birth * Day Month Year Sex * EIS Specialty * Ward/Unit *

Disease Type

■ Medical: 74

■ O&T: 20

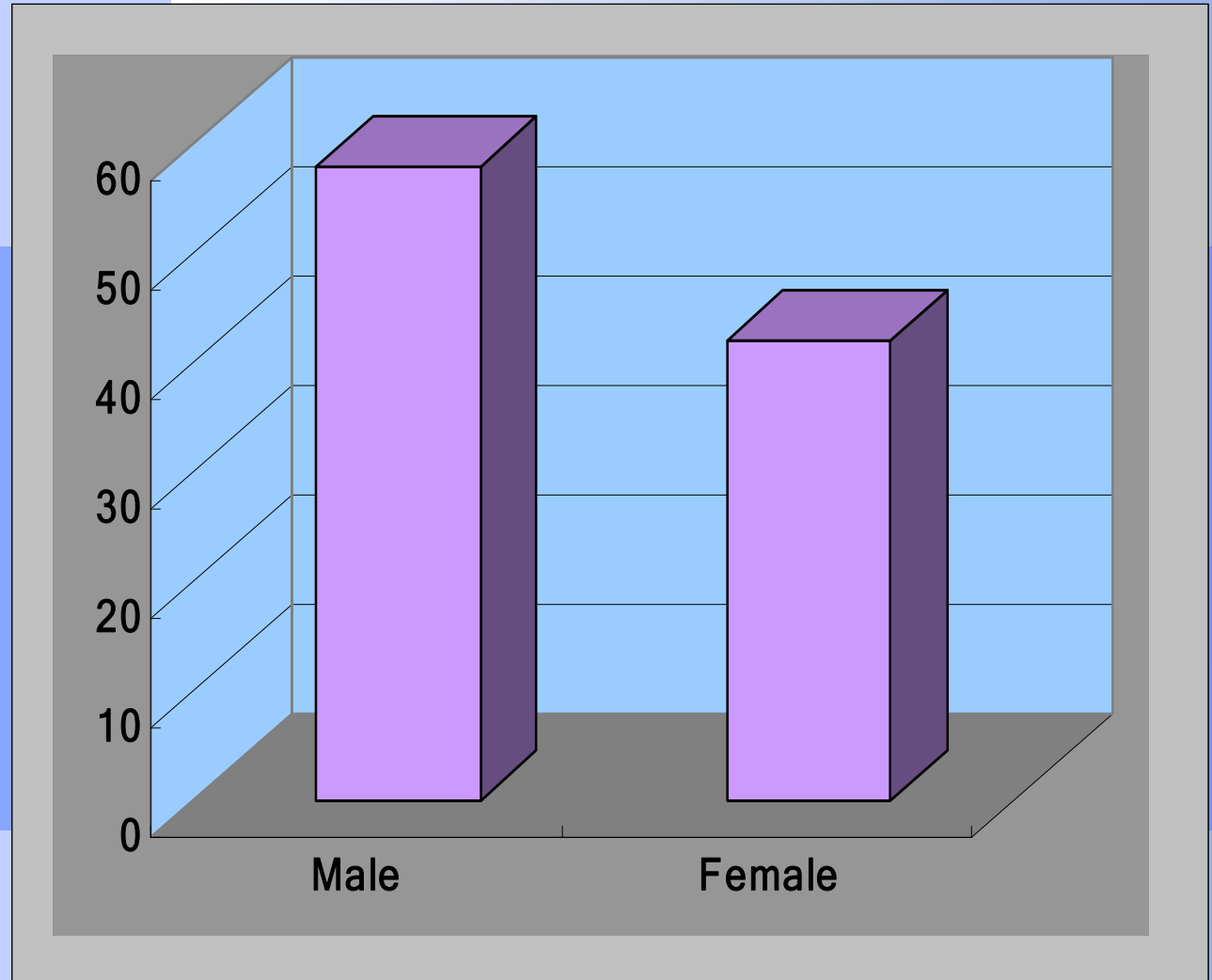
■ NS: 6



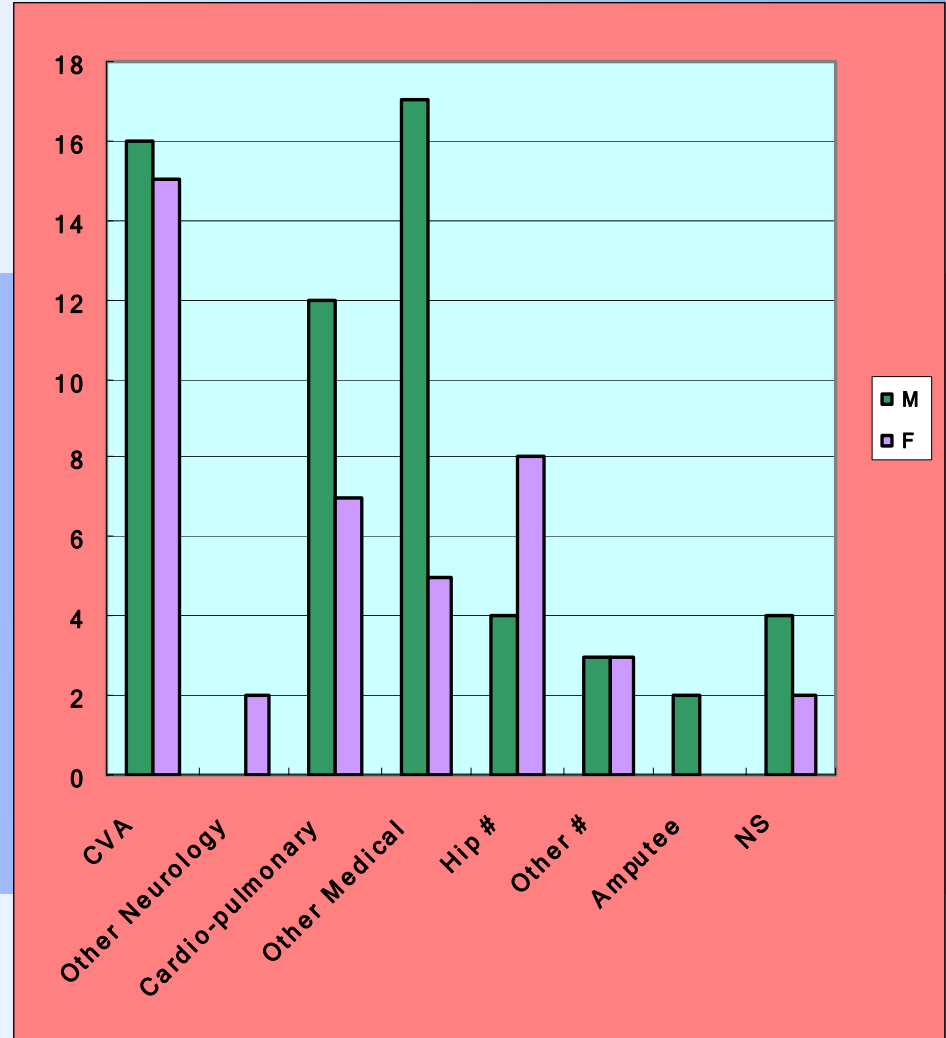
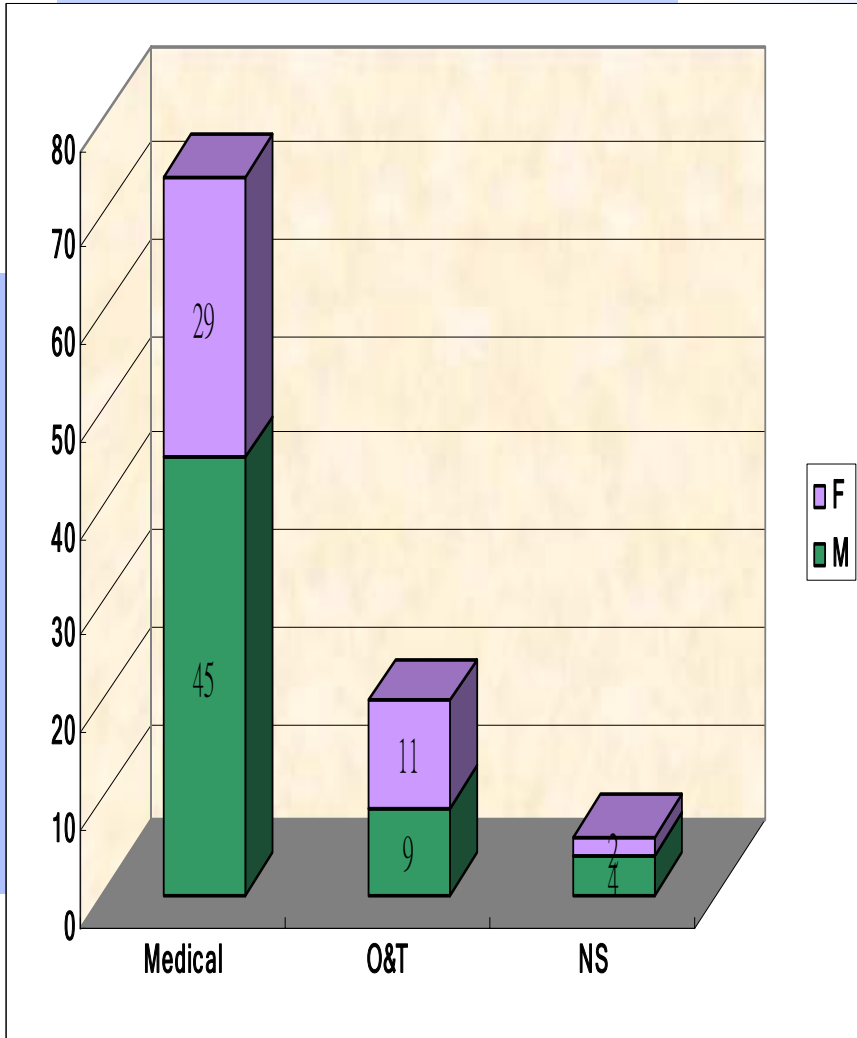
Gender Distribution

■ M = 58

■ F = 42

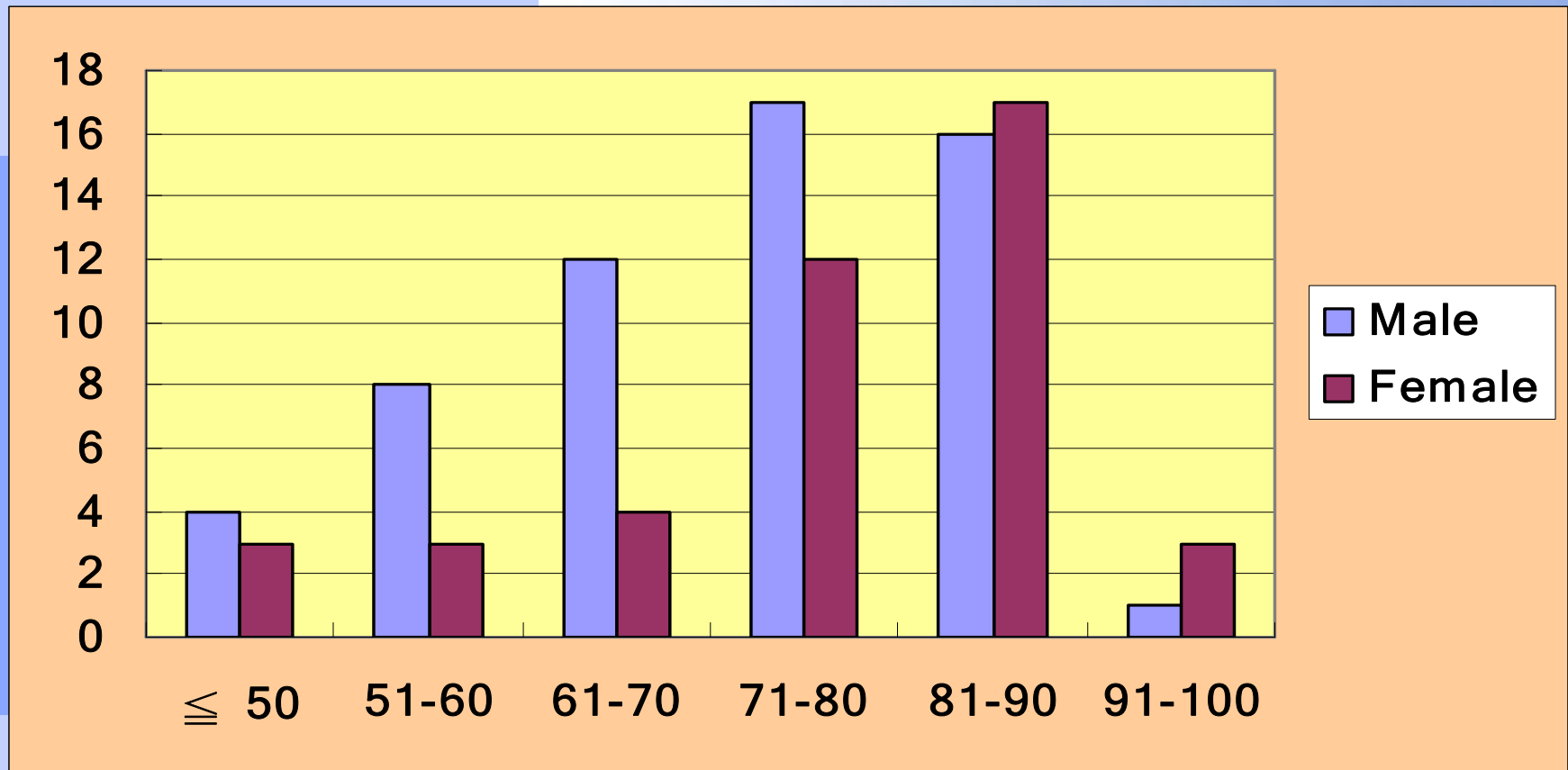


Disease Type in Different Gender

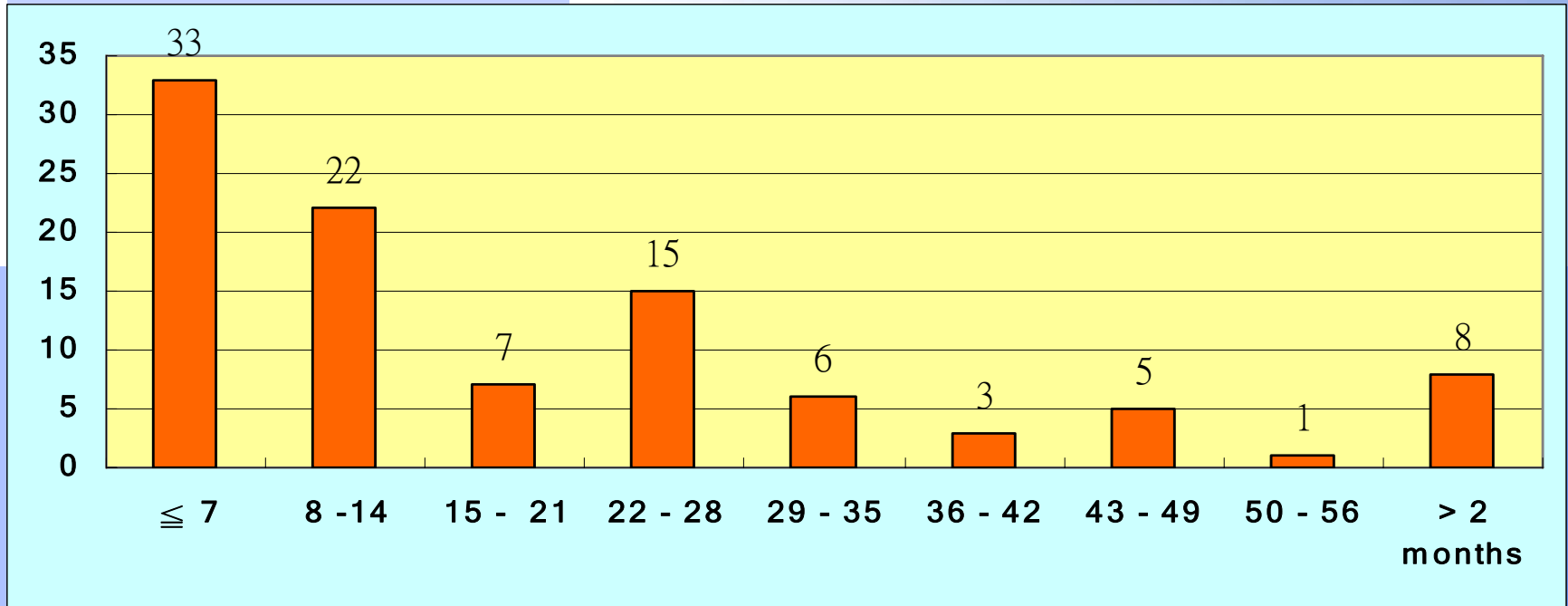


Age Distribution

■ Range: 18 - 99



Length of Stay in KH



■ Days in KH : 0 - 138 days

■ 0 day : 2 cases

■ 1 day : 8 cases

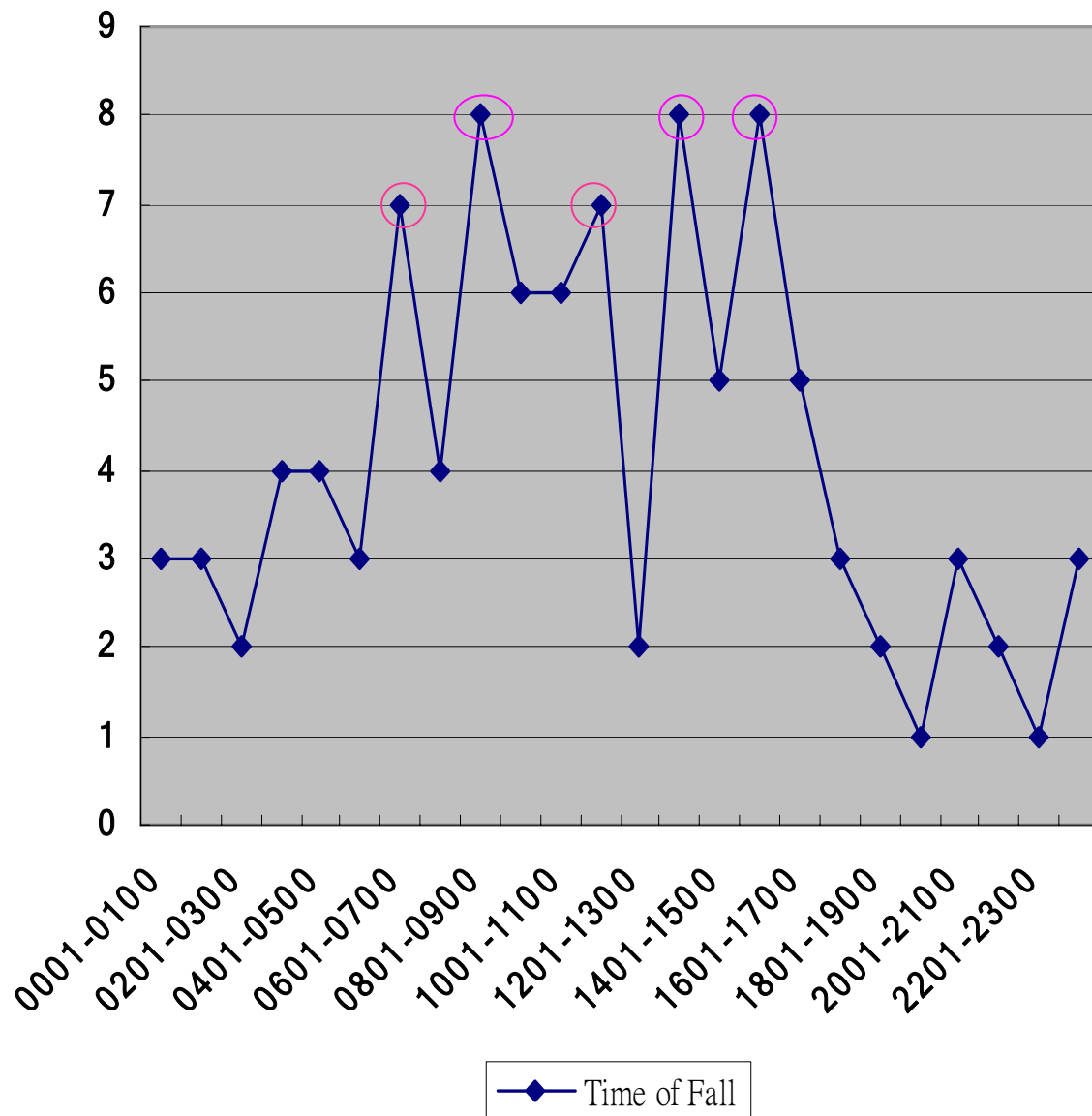
■ 2 days : 5 cases

Mental Status

- Orientated: 82
- Disorientated : 14
- Restless : 1
- Confused : 3

Time of Occurrence

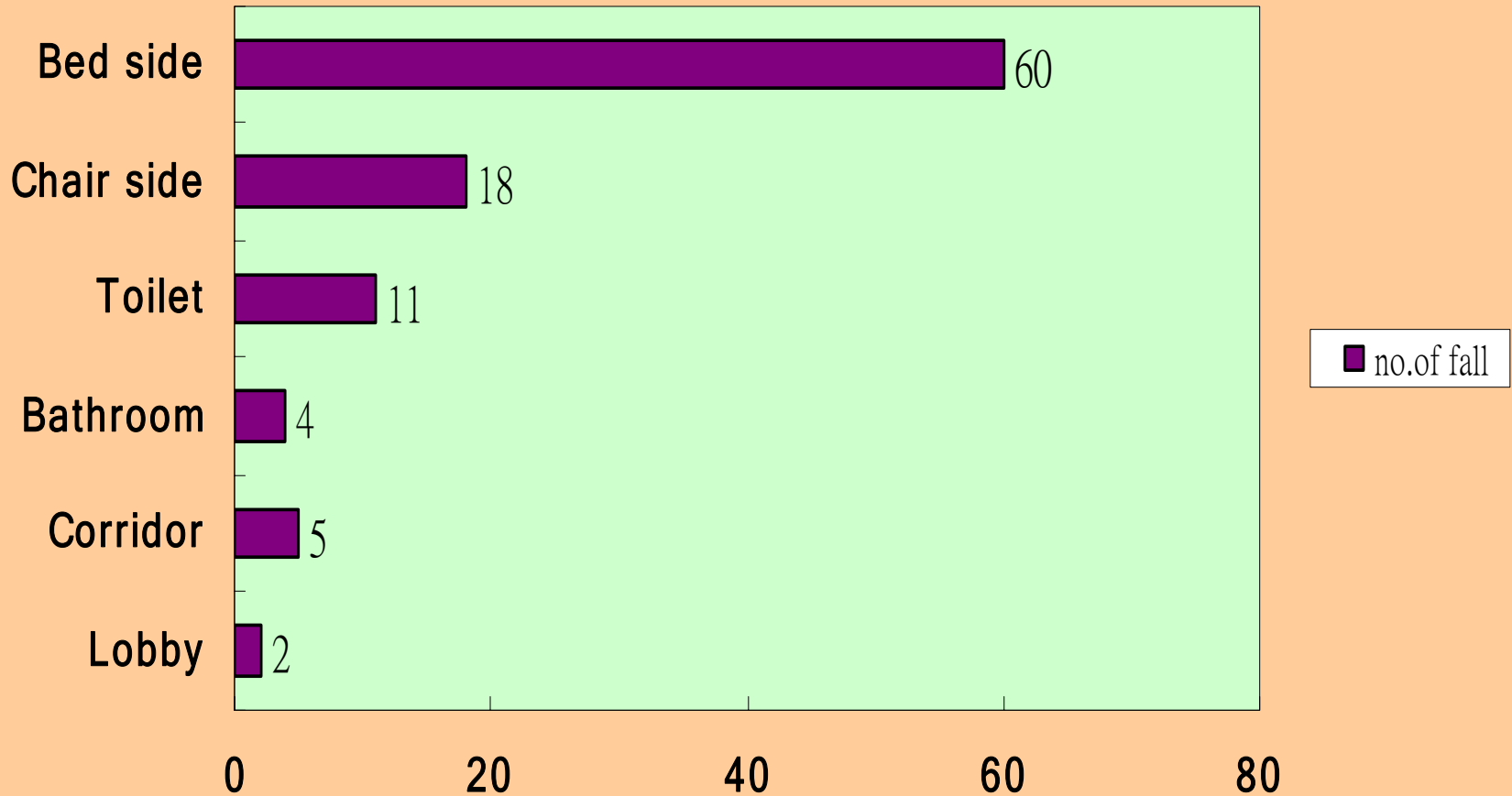
No. of Cases	Time of Fall
1	1901-2000
2	2201-2300
3	0201-0300
	1201-1300
	1801-1900
	2101-2200
4	0001-0100
	0101-0200
	0501-0600
	1701-1800
	2001-2100
	2301-2400
5	0301-0400
	0401-0500
	0701-0800
6	1401-1500
	1601-1700
7	0901-1000
	1001-1100
	0601-0700
	1101-1200
8	0801-0900
	1301-1400
	1501-1600



Ambulation level

- Independent : 15%
- With Assistance: 75%
- With Aids: 41%
- Confined to bed/chair: 15%

Locations of Fall



Bedside & Chair side Area



Restraint Measures

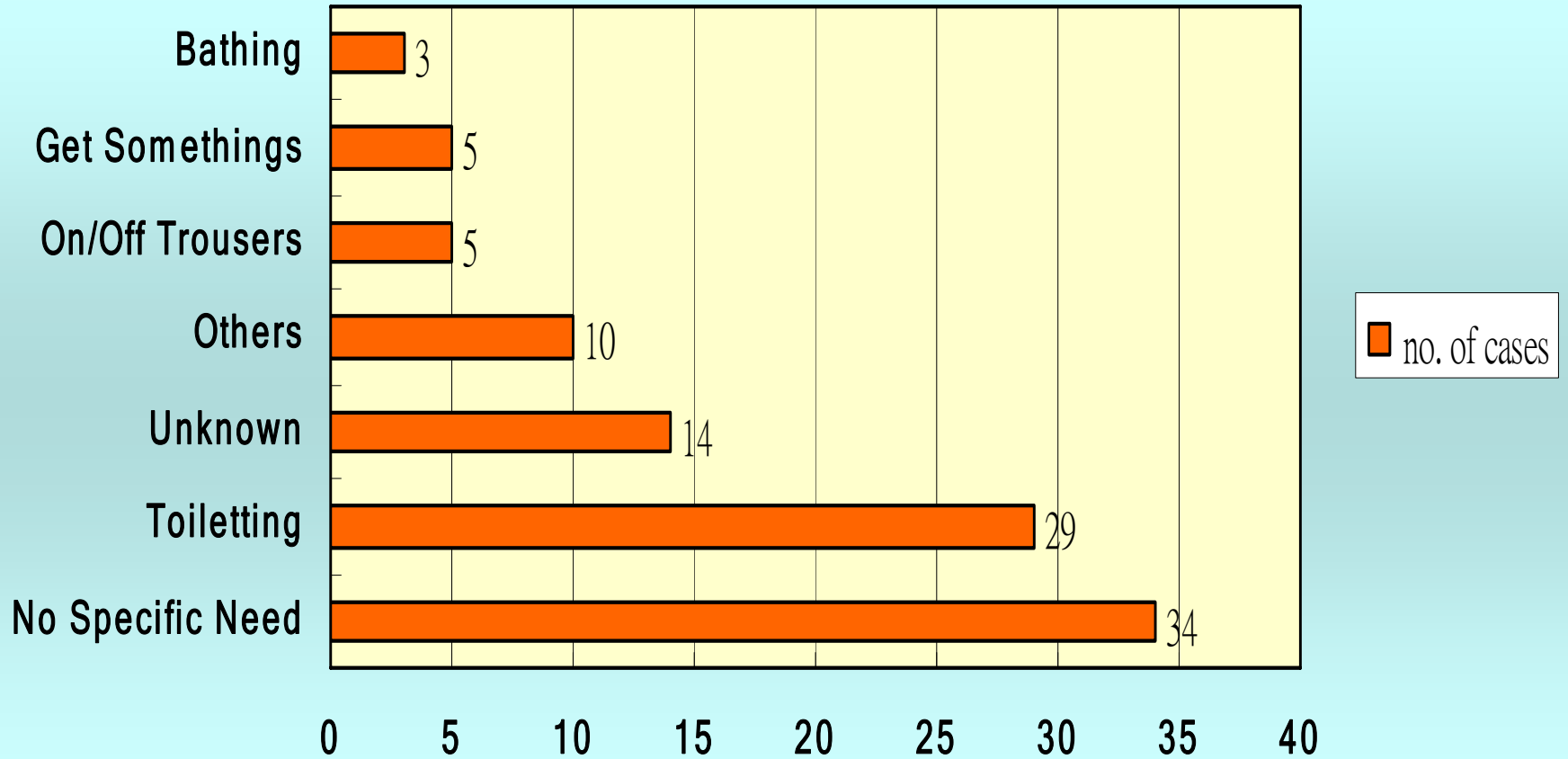


Restraint Measures

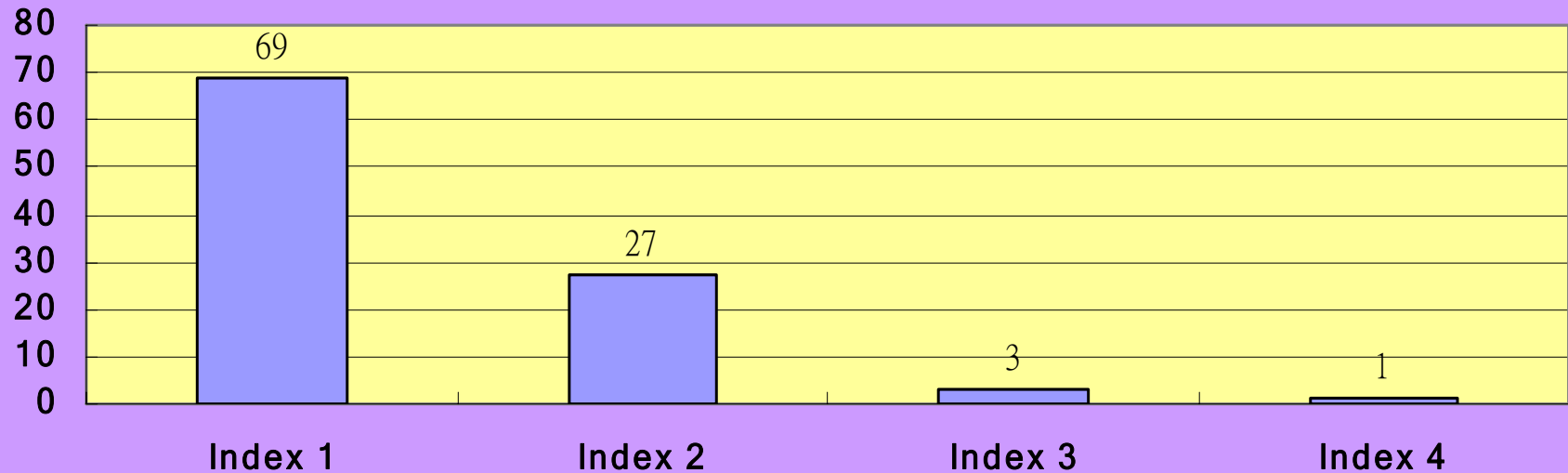
- Safety vest = 16
- Lap board = 15
- Bed side rail = ??

- 29 cases with safety vest or lap board
- 2 cases with safety vest + lap board

Activities at the Time of Fall



Severity Index



1 = Incident occurred (reached patient) but no injury sustained

2 = Minor injury

3 = Temporary morbidity

4 = Significant morbidity

Fall Risk

- 59 cases identified as high fall risk
- 37 cases had history of fall

Particular Findings

- 6 cases (male) had repeated fall within 5, 8, 12, 30 & 33 days
- 8 cases with companion
- 1 case occurred while turning in bed
- 1 case had sedative before bedtime

Recommendations (1)

- Early patient / carer(s) education on fall prevention
- Prompt attention on patient's needs
- Family involvement
- Bed / Chair alarm
- Safe bed design (low bed, half length bedrails)

Bed & Chair Alarm



Ordinary bed vs Electric bed



Recommendations (2)

- Hip protectors
- Reassessing staffing needs
- Periodic review of fall data
- Root cause analysis
- Structured staff education program
- Case sharing
- Exercise program in holidays

Acknowledgements

Department of Rehabilitation,
Kowloon Hospital

- Dr Hobby KY Cheung, COS
- Ms Anita YY Chau, DOM
- Ms KH Ting, WM
- Ms YC Lau, APN
- Mr PS Wu, Ward Steward

Thank You



小心跌倒